

**UK BASKETBALL**

**OFFENSIVE OPTIONS**

**Sports, C1:** Cats can play post-up if they have to; John Clay says close call can be beneficial  
**On Kentucky.com:** See video and a slideshow from Monday's dramatic victory over Miami

**Launching Eagles**

**Life + Neighbors, B1:** Bath County man has guided 27 boys into Eagle Scouts.

**City | Region, A3:** Beshear says slots bill would pass » **Sports, C1:** UK women beat Morehead » **Business, C7:** Coldstream building almost finished

NOVEMBER 18, 2009 | WEDNESDAY | METRO FINAL EDITION |

75¢

**MUSICAL MURAL**



Buy photo reprints at [Kentucky.com](http://Kentucky.com)

CHARLES BERTRAM | [cbertram@herald-leader.com](mailto:cbertram@herald-leader.com)

C. Godfrey walked past the brightly colored mural on the side of Al's Bar at North Limestone and West Sixth Street in Lexington on Tuesday. The mural, painted by Mike Burrell in 2008, is a tribute to the culture and rich musical heritage of the north side. Godfrey, umbrella in hand, didn't let a little rain stop her from walking to a local market.

**NATURAL RESOURCES COMMISSION**

**Official denied permits, got fired**

**FORMER HEAD OF DIVISION SAYS HE REFUSED TO APPROVE ILLEGAL MINING**

By John Cheves

[jcheves@herald-leader.com](mailto:jcheves@herald-leader.com)

The former head of Kentucky's mine permit division, who was fired last week by Gov. Steve Beshear, said Tuesday he had been trying to block what he called illegal mining permit practices.

Ron Mills said he refused to issue about a half-dozen mine permits requested over the past year, chiefly by the politically connected Alliance Resource Partners of Tulsa, Okla., because they did not comply with federal and state mining law.

Coal companies are required to provide documentation showing they have a legal right to enter and disturb all of the areas they will mine, Mills said. Instead, the Beshear administration issued permits to coal companies that demonstrate the right to enter and mine as little as two-thirds of the land in question, he said.

"I refused to sign those applications," Mills said. "I thought they were illegal. There was no support for them under the law."

See MINING, A2

**Ky. ponders how to repay U.S. jobless funds**

**MAY OWE UP TO \$1 BILLION**

By Linda B. Blackford

[lblackford@herald-leader.com](mailto:lblackford@herald-leader.com)

Kentucky has borrowed nearly \$474 million from the federal government to pay unemployment benefits this year and the total will likely reach \$1 billion before the state's economy improves.

An ongoing debate about how to repay that money and stabilize the state's unemployment insurance fund reaches a critical crossroads Wednesday, when a divided task force on the issue hopes to agree on an action plan.

The group appointed by Gov. Steve Beshear has been meeting since April and must come up with recommendations to give the General Assembly in January, when legislators must also grapple with a budget shortfall for the next two years that may reach \$1 billion.

More than 225,000 Kentuckians are looking for work, putting the state's unemployment rate at 10.9 percent.

Not surprisingly, the debate over how to fix the unemployment fund has split between those who represent employees and those who represent employers.

See JOBLESS FUNDS, A16

**Nunn's effort to pay legal bills thwarted**

**ROSS'S FAMILY STAKES A CLAIM**

By Bill Estep and Karla Ward

[bestep@herald-leader.com](mailto:bestep@herald-leader.com) and [kward1@herald-leader.com](mailto:kward1@herald-leader.com)

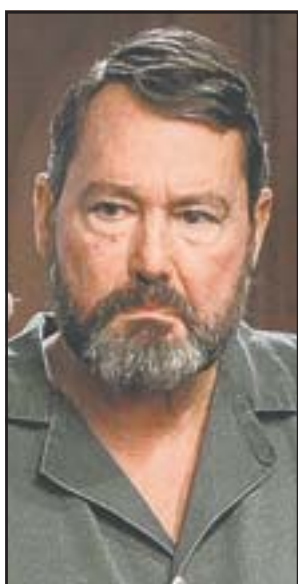
Former state Rep. Steve Nunn's Glasgow home was sold at auction last weekend to help pay his legal bills, but the money from the sale might be tied up for a while.

Nunn faces a murder charge in the shooting of former fiancée Amanda Ross.

An agreed order for injunctive relief, filed Monday in Fayette Circuit Court, is part of a wrongful death lawsuit filed in late September by Ross's mother, Diana Ross.

Under the agreement, proceeds from the sale of Nunn's house and personal property are to be held in escrow "until further orders

See NUNN, A2



SCOTT UTTERBACK  
 COURIER-JOURNAL | ASSOCIATED PRESS

Steve Nunn, who has grown a beard since his arrest, pleaded not guilty Tuesday to six wanton endangerment charges in Hart County.

**Army suicides to be up 5th straight year**

**140 CASES SO FAR ALREADY MATCHES 2008**

By Nancy A. Youssef

McClatchy Newspapers

WASHINGTON

Suicides in the Army are expected to reach a new high this year, with 140 suspected cases among active-duty soldiers so far, Army officials said Tuesday.

This will be the fifth year in a row that grim statistic rose despite an aggressive military campaign to tackle the mental health stigma in the Army. This year's number already matches that for all of 2008. There were 115 suicides in 2007 and 102 in 2006.

**Job assistance:** The Army is helping veterans with "invisible wounds" find work. **Page A2**

These new statistics come as the military is investigating what may have driven Army psychiatrist Maj. Nidal Malik Hasan, 39, who allegedly shot 55 people Nov. 5 at Fort Hood, Texas. The military has charged Hasan, who was set to deploy to Afghanistan, with 13 counts of premeditated murder.

Gen. Peter W. Chiarelli,

See SUICIDES, A2



**MOSTLY CLOUDY**

Chance of precipitation 50%. **Weather, C12**

**52 | 38**  
 HIGH | LOW

**INDEX**

Vol. 27 No. 315  
 © 2009

Business . . . . . C7  
 City | Region . . . . . A3-7  
 Classified . . . . . C8-11  
 Comics . . . . . B6-7

Crossword . . . . . B7, C11  
 Dear Abby . . . . . B7  
 Horoscope . . . . . B6  
 Movies . . . . . B4

Obituaries . . . . . A8  
 Opinions . . . . . A14-15  
 Sports . . . . . C1-6  
 Your Health . . . . . C12


**HOW TO REACH US**

**Delivery:** 1-800-999-8881  
**Classified:** 233-7878 or 1-800-933-7355

**Big boo-boos & little boo-boos need to be fixed right away.**

**PEDIATRIC EMERGENCY CENTER OPEN 24/7**

Staffed with board-certified emergency room physicians and experienced registered nurses. In kid-friendly rooms, our caring professionals take care of all kinds of illnesses and injuries, any hour of the day or night.



Saint Joseph East **Traxx**

[SaintJosephEastKY.org](http://SaintJosephEastKY.org)